



B1p Bass Preamp

OWNERS MANUAL

REV G



Copyright 2020, Sluggo Music Technology LLC
All Rights Reserved.

Sluggo Music Limited Warranty

Sluggo Music Technology LLC warrants this product to be free of defects in material and workmanship for the period of one year from the date of original purchase. This warranty is only applicable to the original retail purchaser. During the warranty period Sluggo Music shall, at its sole discretion, either repair or replace, free of charge, any product that it deems to be defective upon inspection by Sluggo Music Technology LLC or its **authorized service representative**. To obtain warranty service, the purchaser must first obtain a Return Authorization Number from our service department and shipping address where to return the unit for service. All authorized returns must be sent to our service department postage prepaid, insured for full replacement value, properly packaged and accompanied with a description of the problem. Sluggo Music reserves the right to update any unit returned for repair and the right to change or improve the design of the product at any time without prior notice. This warranty does not cover claims for damage due to abuse, neglect, alteration or attempted repair by unauthorized personnel, and is limited to failures arising during normal use that are due to defects in material or workmanship in the product only. Any warranties, including implied warranties of merchantability and fitness for a particular purpose, are limited in duration to the length of this original warranty. In no event will Sluggo Music Technology LLC be liable for incidental or consequential damages resulting from the breach of any express or implied warranty including damage to property, damage based on inconvenience or loss of use of the product, and personal injury to the extent permitted by law. This warranty gives you specific legal rights, which may vary from state to state. This warranty applies only to products sold in the United States of America. For warranty information in all other countries please refer to your local distributor.

Sluggo Music Technology LLC
P.O. Box 913
Dunedin, FL 34697-0913
(727) 247-2520

sales@sluggomusic.com
service@sluggomusic.com

**SUNCOAST™ is a trademark of
Sluggo Music Technology LLC, Copyright 2020
All Rights Reserved**

1 Overview

- 1.1 Introduction
- 1.2 Features

2 Controls

- 2.1 Front Panel Layout
- 2.2 Front Panel Controls
- 2.3 Rear Panel Layout
- 2.4 Rear Panel Jack Description
- 2.5 Internal Overdrive Preamp Controls

3 Operation

- 3.1 Operating Instructions
- 3.2 External Effects Patching
- 3.3 Preamp tone settings

4 Technical

- 4.1 Specifications
- 4.2 Block Diagram

1.1 Introduction

Thank you for purchasing the SUNCOAST - B1p Bass Preamp. It is our commitment to providing our customers with the highest quality, musical instrument preamps, designed and built in the USA. With our knowledge and experience in classic designs over more than 30 years, we set out to recreate that unique sound from our past utilized by many of your favorite artists.

1.2 Features

The following is a summary of your B1p Bass Preamp's unique features:

- The Ultimate Solid-State Bass Preamp in a pedal.
- The Boost Mode preamp features Super Boost™ triple Overdrive and separate EQ for Monstrous, Harmonic Heavy, Bass solo's.
- Internal trim pots for Boost preamp Drive, Bass, Midrange and Treble.
- Internal dip switch for selecting OD1 (Normal) or OD2 (Super Boost).
- Buffered effects loop Send and Return jacks allows for patching external FX between the preamp out and limiter input.
- True Bypass footswitch.
- Active +/-20dB Bass, Midrange and Treble EQ with sweepable Midrange Frequency control.
- Classic Dual-Knee Compressor/Limiter with variable Threshold control and Footswitch with Active LED.
- 100% discreet analog circuit design utilizing precision surface mount technology.
- Custom 280 kHz switching DC power supply for +/-15V internal operation, 26V peak to peak Dynamic Headroom.
- Solid, Diecast Aluminum Enclosure, Durable Black Satin Powder Coating - Dimensions 4.7 x 7.4 x 1.3"
- Standard 9VDC, 300mA Adapter

2.1 Front Panel Layout



2.2 Front Panel Controls

Threshold - This knob adjusts the Compressor/Limiter threshold level.

Volume - The Volume control adjusts the output level of the preamp.

Bass – This 30Hz tone control adjusts low frequencies +/- 15dB.

Freq - This control adjusts the midrange center frequency 70Hz-2KHz.

Midrange - This knob adjusts the Midrange gain +/- 15dB.

Treble - This 5KHz tone control adjusts the high frequency +/-15dB.

Drive - The Drive control adjusts the input drive level of the preamp.



Limiter Footswitch – Turns the Limiter On/Off, LED indicates Limiting.

Boost Footswitch – Engages the Overdrive Boost Preamp.

Bypass Footswitch – Pedal is in Bypass Mode when On.

2.3 Rear Panel Layout



2.4 Rear Panel Jack Description

Power Input - Power input jack, 9VDC @ 300mA (Center–Negative).

Input - Main instrument input jack.

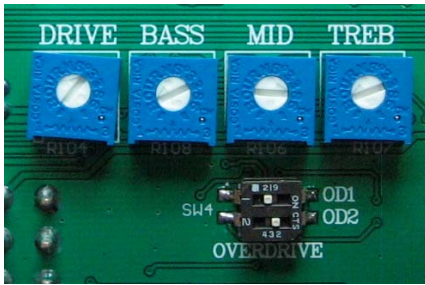
Output - Main preamp output jack.

Boost Vol – Output Volume control for CH1 Overdrive Boost preamp.

Send - Effects Loop Send jack, (preamp out).

Return - Effects Loop Return jack, (limiter in).

2.5 Internal Overdrive Preamp Controls



Overdrive Preamp – Controls are accessible by removing the bottom cover. The internal Drive, Bass, Middle and Treble trimpots can be used to customize your Overdrive level and tone.

Overdrive Preamp EQ

1. Drive – Adjusts the input drive gain of Overdrive Preamp.
2. Treble – Active +/-15dB High tone control (4KHz).
3. Middle – Active +/-15dB Mid tone control (500Hz/1.2kHz).
4. Bass – Active +/-15dB Low tone control (50Hz).

Overdrive Dip Switch

1. OD1 – Selects (Normal) Boost.
2. OD2 – Selects (Super Boost™) Triple Overdrive.

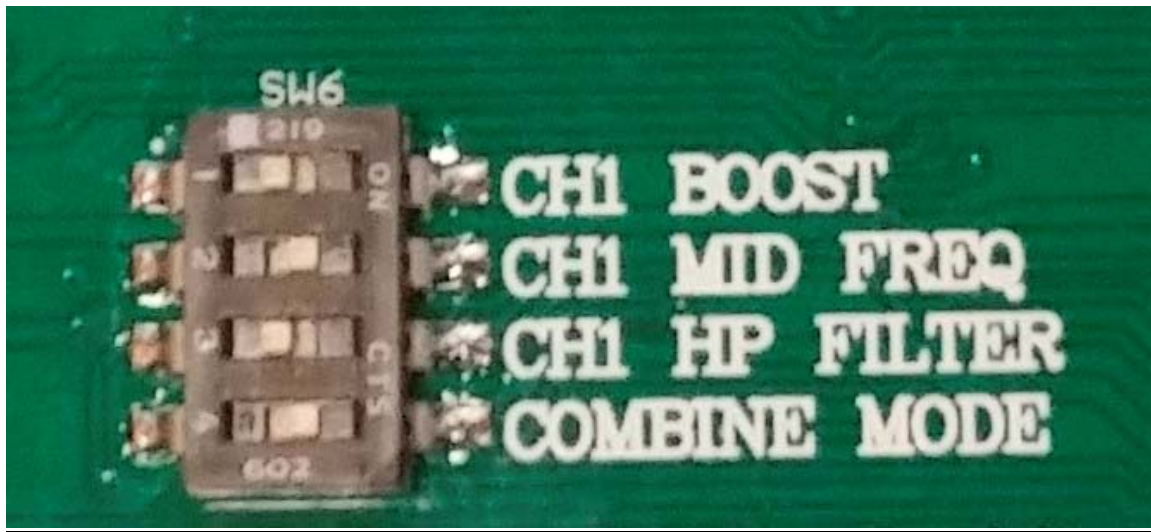
Note: Only one OD dip switch can be ON at a time, Otherwise the Overdrive Preamp circuitry could oscillate or Motorboat.

Input Dip Switch

1. Input Gain – Adds +10dB of input gain for low output pickups.
2. CH2 Boost – Adds +20dB Mid/Treble Boost to the Clean preamp.



CH1 Preamp Dip Switch



1. CH1 Boost – +20dB of Gain with Treble boost.
2. CH1 Mid Freq – Mid Frequency select (500Hz/1.2Hz).
3. CH1 HP Filter – Bass Cut (Off) / Full Range (ON).
4. Combine Mode– Channel Switch (Off) / Combine Mode (ON).

3.1 Operating Instructions

- Always connect your instrument input and preamp output prior to turning the unit or pedal board ON.
- Use only quality coaxial instrument cable (guitar cord) patching your preamp to your amplifier.
- Always connect the unit a proper power source and use a grounded outlet strip, otherwise a shock hazard may result, especially when the unit is connected to other equipment. Domestic 9VDC power adapters should be connected to 115VAC, 60 Hz. Connection to improper line voltage may cause permanent damage.
- Do not expose this unit to rain or excessive moisture. This may cause a shock hazard or damage to the unit.

SAFETY NOTICE: There are no user serviceable parts inside the unit. Refer servicing to qualified personnel only.

3.2 External Effects Patching

Bass Guitar > Envelope Filter > Flange > Chorus > B1p Input

B1p Send > Vol Pedal > Digital Delay > Noise Gate > B1p Return

B1p Output > Power Amplifier > Speaker

3.3 Preamp Tone Settings

These settings are merely a suggested starting point from which you can set to your own personal taste.

Limiter - 5

Volume – 7 (adjust for desired loudness)

Bass – 4

Freq - 6

Middle – 6

Treble – 4

Drive – 7

4.1 Specifications

Input Voltage – 9VDC

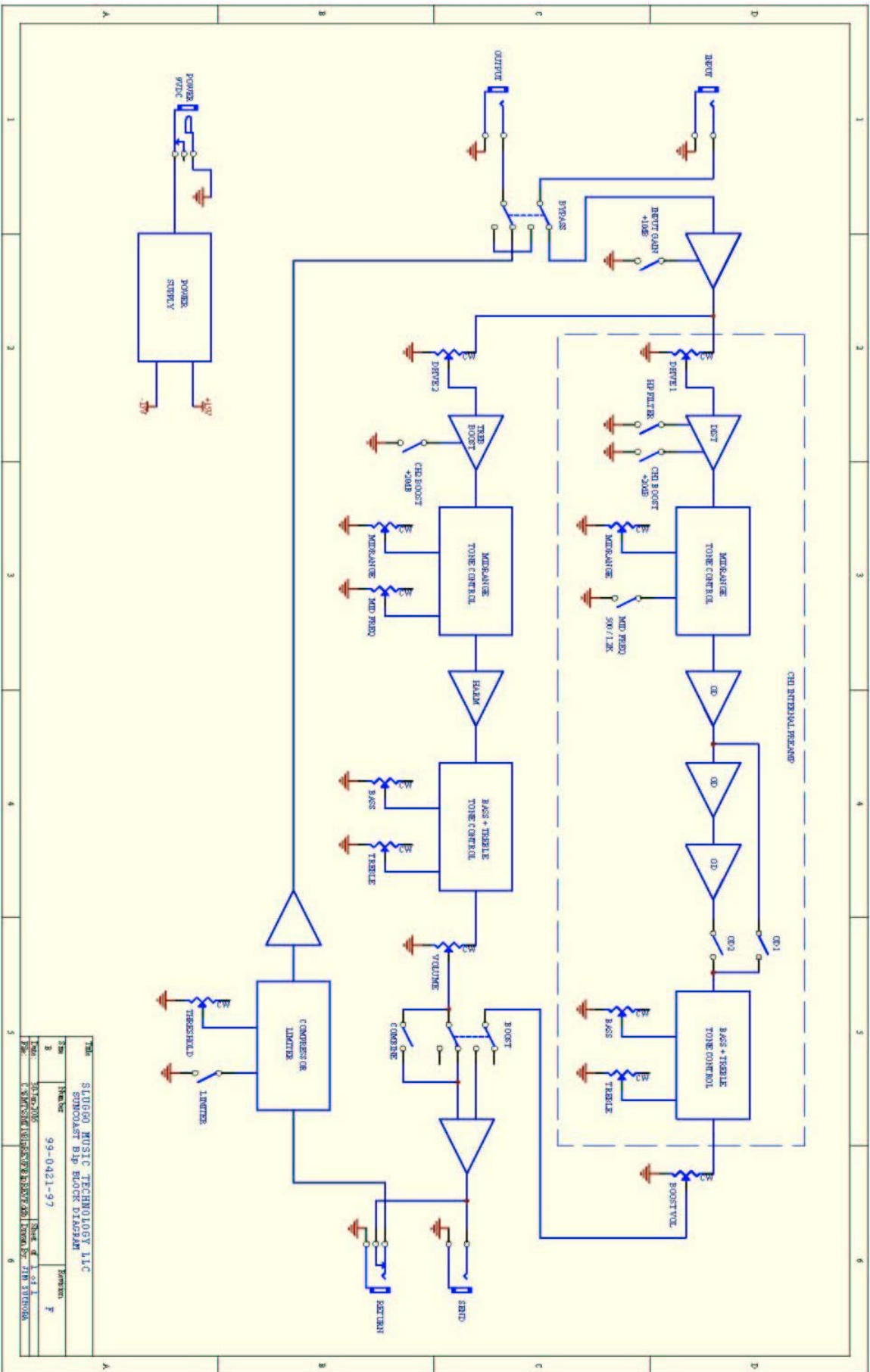
Current Consumption – 250mA

Input Impedance – 1Meg Ohm

Output Impedance – 600 Ohms

Dimensions – 7.4”W x 4.7”H x 1.3”D

Weight – 1.1lbs



THE STUDIO MUSIC TECHNOLOGY LLC	
SCHOLAST BIP BLOCK DIAGRAM	
DATE	9-9-2008
REV	1
DESIGNER	KEVIN F
CHECKED	KEVIN F
DATE	9-9-2008
SHEET 1 OF 1	
C:\STUDIO\MUSIC\BIP\BLOCK\BIP.BIP	

